

0942.000

# OSPREY OAKS P.U.D.

## A PARCEL OF LAND LYING WITHIN THE NORTHEAST ONE-QUARTER OF SECTION 10, TOWNSHIP 45 SOUTH, RANGE 42 EAST, PALM BEACH COUNTY, FLORIDA SHEET 5 OF 13

STATE OF FLORIDA )  
 COUNTY OF PALM BEACH ) S.S.

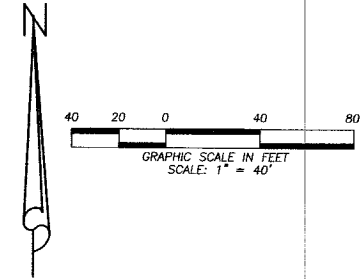
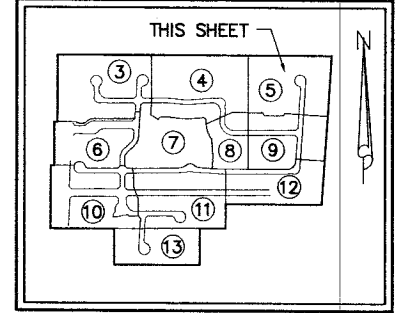
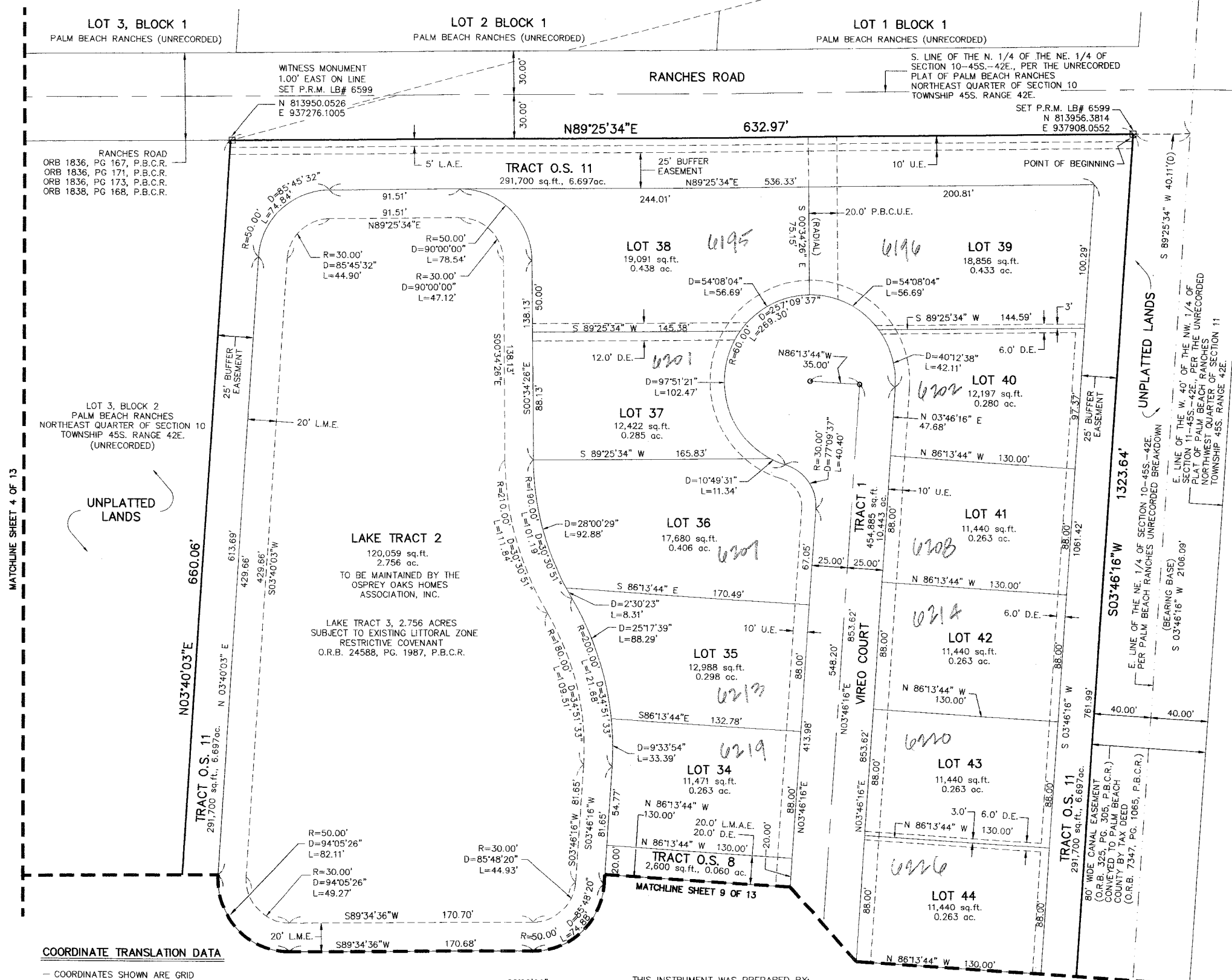
THIS INSTRUMENT WAS FILED FOR RECORD AT \_\_\_\_\_ M.  
 THIS \_\_\_\_\_  
 DAY OF \_\_\_\_\_ 20\_\_\_\_  
 AND DULY RECORDED IN:  
 PLAT BOOK \_\_\_\_\_  
 ON PAGE \_\_\_\_\_

SHARON R. BOCK  
 CLERK & COMPTROLLER  
 PALM BEACH COUNTY

BY: \_\_\_\_\_  
 DEPUTY CLERK

POINT OF COMMENCEMENT  
 NE CORNER OF SECTION  
 10-45S-42E PER PALM BEACH  
 RANCHES UNRECORDED PLAT

NE CORNER OF SECTION  
 10-45S-42E PER PALM BEACH  
 COUNTY SURVEY SECTION POSITION  
 N= 814677.0000 E= 937995.9410  
 UTILIZED FOR PLAT TIE



- LEGEND**
- D = CENTRAL ANGLE
  - L = ARC LENGTH
  - L.A.E. = LIMITED ACCESS EASEMENT
  - LB = LICENSED BUSINESS
  - L.M.A.E. = LAKE MAINTENANCE ACCESS EASEMENT
  - L.M.E. = LAKE MAINTENANCE EASEMENT
  - O.R.B. = OFFICIAL RECORD BOOK
  - P.B. = PLAT BOOK
  - P.B.C.R. = PALM BEACH COUNTY RECORDS
  - P.B.C.L.S.E. = PALM BEACH COUNTY LIFT STATION EASEMENT
  - P.B.C.U.E. = PALM BEACH COUNTY UTILITY EASEMENT
  - P.C.N. = PARCEL CONTROL NUMBER
  - PG. = PAGE(S)
  - P.R.M. = PERMANENT REFERENCE MONUMENT
  - R = RADIUS
  - (T) = TOTAL
  - U.E. = UTILITY EASEMENT
  - = PERMANENT REFERENCE MONUMENT (P.R.M.) 4" X 4" CONCRETE MONUMENT WITH P.K. NAIL IN BRASS DISC STAMPED "PRM LB 6599"
  - = (P.C.P.) SET MAG NAIL IN BRASS DISC LB 6599

**COORDINATE TRANSLATION DATA**

- COORDINATES SHOWN ARE GRID
- DATUM = NAD 83 1990 ADJUSTMENT
- ZONE = FLORIDA EAST
- LINEAR UNIT = US SURVEY FEET
- COORDINATE SYSTEM 1983 STATE PLANE TRANSVERSE MERCATOR PROJECTION
- GROUND DISTANCE X SCALE FACTOR = GRID DISTANCE
- ALL DISTANCES ARE GROUND UNLESS OTHERWISE NOTED
- SCALE FACTOR = 1.0000329

S 80°22'36" E (PLAT) = BEARING ROTATION  
 S 80°22'36" E (GRID) = BEARING ROTATION (PLAT TO GRID)

LINE BETWEEN AND PALM BEACH COUNTY SURVEY SECTION HORIZONTAL CONTROL MONUMENT "CHAR-LAKE" AND "COURSE"

THIS INSTRUMENT WAS PREPARED BY:  
 DAVID A. BOWER, P.S.M. #5888 IN THE OFFICES  
 OF DENNIS J. LEAVY AND ASSOCIATES, INC.  
 CERTIFICATE OF AUTHORIZATION NUMBER: LB6599  
 460 BUSINESS PARK WAY, SUITE B  
 ROYAL PALM BEACH, FLORIDA 33411  
 PHONE: (561) 753 - 0650  
 FAX: (561) 753 - 0290

**SHEET 5 OF 13**

**DENNIS J. LEAVY & ASSOCIATES, INC.**  
**LAND SURVEYORS AND MAPPERS**

460 BUSINESS PARK WAY \* SUITE B \* ROYAL PALM BEACH, FL \* 33411  
 PHONE: (561) 753-0650 FAX: (561) 753-0290

SCALE: AS SHOWN	CHECKED BY: DAB	DATE: 01/04/11
DRAWN BY: RRM	JOB NO.: 10-062-001	